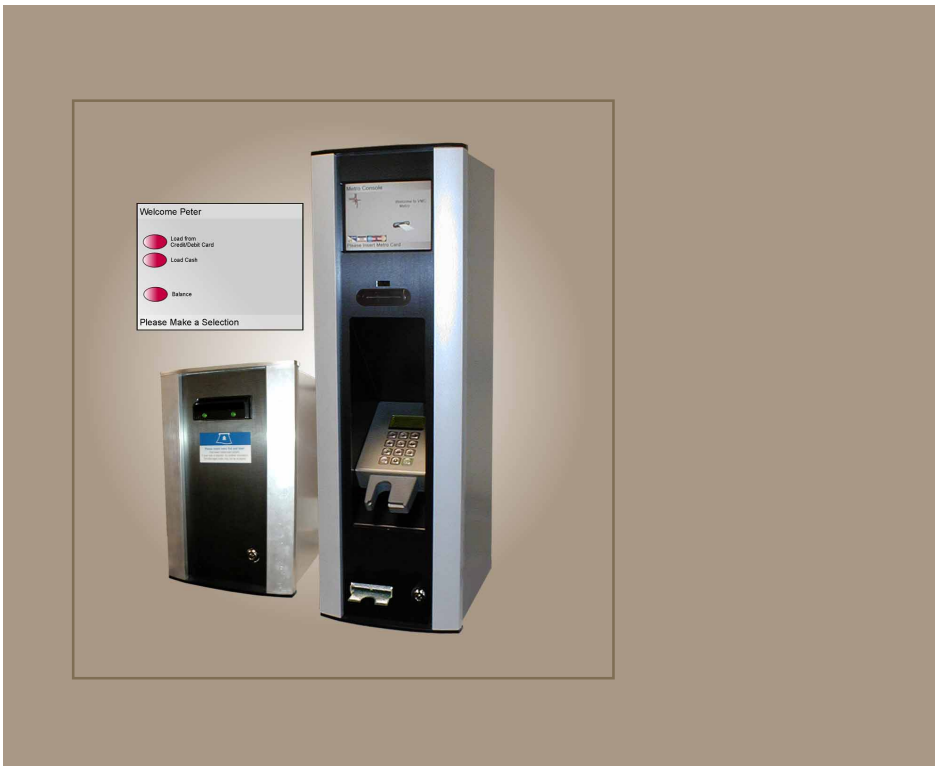


Metro Console

The Metro Console offers the easiest way to top-up cashless cards. Works with Visa, Mastercard, and American Express.



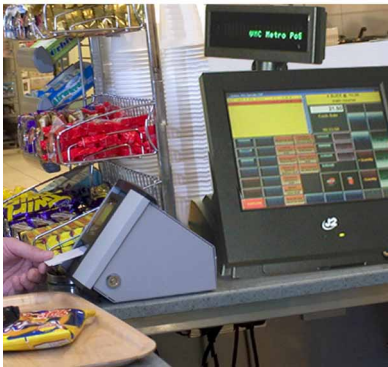
The Metro Console offers the latest in touch screen technology. Its main function is to permit Metro card revaluation by Chip and PIN credit/debit cards. With its recessed PIN pad for number entry, security is ensured. An optional 'add on' note validator means it can also be used for note loading. Further services may include the automatic implementation of payroll schemes, currency exchange where an organisation

is using Metro Consoles across international borders, and card loading from Metro web accounts.

The console is audited via a network connection to Metro Manager where a wide range of reports can be generated to cover management requirements.

In sum, it is possible to combine all of your loading needs into the Metro Console, making it a one-stop-shop for topping up Metro cashless cards.





Features Summary

- Uses the latest Chip & PIN technology
- Completely cashless
- Receipt offered with every Chip & PIN or currency exchange transaction
- Touch screen technology
- Easy to use
- Auditing via network
- Can be combined with note loader to create one-stop-shop
- MetroKey or MetroCard versions available
- Retains the last 2000 transactions
- Requires 24/7 broadband internet connection

Components / Ratings

- Two Integral power supplies, both single phase 90 – 270v ac with 3A fuses
- EVA (CVS) compliant card/key reader
- Compliant with Chip & PIN standards
- Dione Secura PIN entry device
- Thermal receipt printer

Physical

- Cabinet Powder coated mild steel (Grey RAL 7036)
- Door Powder coated aluminium extrusion silver (RAL 9006) with black (RAL 9005) end caps, charcoal patterned stainless steel facia panel
- Touch Screen 6.4" diagonal full colour touchscreen
- Power cable Rear central top cable entry

Dimensions

- | | |
|--------------------------|---------------------------------|
| Console (cabinet only) | Note Validator (cabinet only) |
| Height: 716mm | Height: 350mm |
| Width: 228mm | Width: 228mm |
| Depth: 265mm | Depth: 265mm |
| Console (cabinet + door) | Note Validator (cabinet + door) |
| Height: 732mm | Height: 367mm |
| Width: 235mm | Width: 235mm |
| Depth: 300mm | Depth: 300mm |

Part Numbers

- | | |
|---------------------------|--------|
| Metro Console: | |
| - Mifare card | VCM312 |
| - Mifare keys | VKM312 |
| - Legic card | VCL312 |
| - iCLASS card | VCH312 |
| Additional note validator | VG353 |
| Optional pedestal base | VP2169 |



Contacting VMC

VMC House
Northfield Road
Southam
Warwickshire
United Kingdom
CV47 0FG

T: 01926 816400
www.vmcld.co.uk
sales@vmcld.co.uk